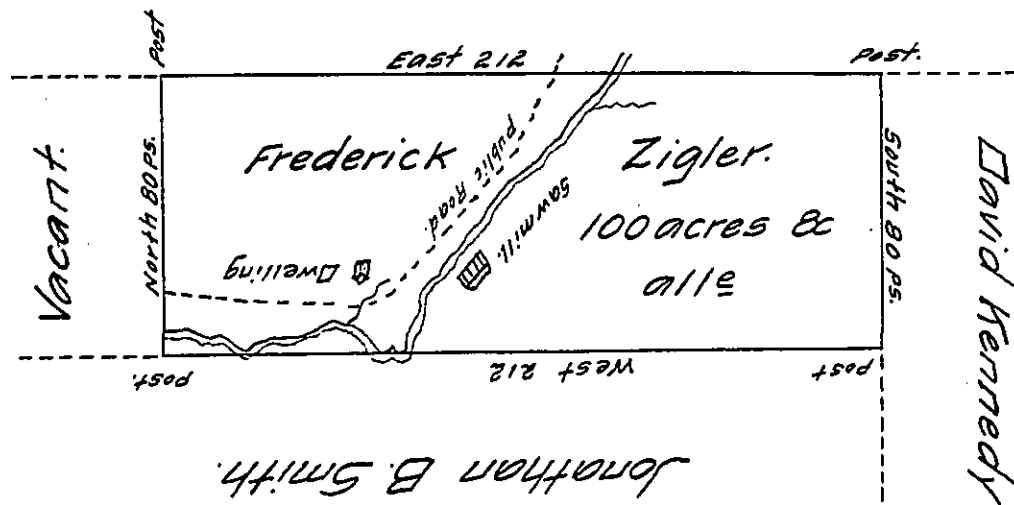


Mary Ann Kennedy.



Situate in Brady township Clearfield county containing one hundred acres and allowance of six per cent. Surveyed 3rd of August 1854 in pursuance of a warrant granted to Frederick Zigler dated 30th June 1854.

Tho. Ross C.S.

To J. Porter Brawley Esqr.

Surveyor General.

N. B. The improvements are upon the above Survey a dwelling house a Saw Mill and about five acres cleared land some of the above improvements may have been made fifteen years.

Tho. Ross.

IN TESTIMONY that the above is a copy of the original remaining on file in the Department of Internal Affairs of Pennsylvania, made conformably to an Act of Assembly approved the 16th day of February 1833, I have hereunto set my hand and caused the Seal of said Department to be affixed at Harrisburg, this fourteenth day of August 1907.

Henry Howell
Secretary of Internal Affairs.